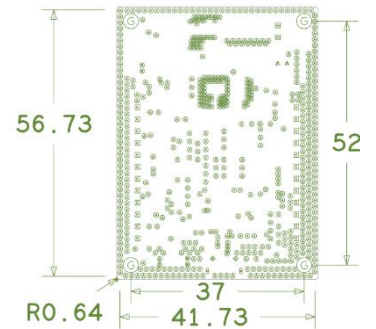
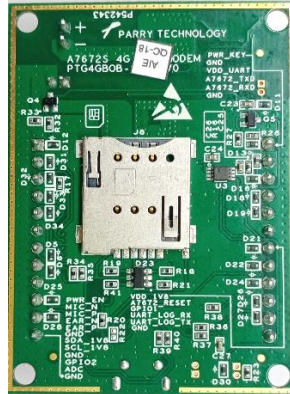


ParryTech “4G LTE GSM Modem PCB” is based on A7672 4G LTE module supporting GSM, LTE-FDD, LTE-TDD communication at LTE-CAT1 speed. AT Command interface is possible either using the UART pins or using the USB interface. Onboard UART level translator can support any of Microcontroller I/O levels from 3.3V to 5.0V. Two digital I/Os and one ADC input are available for remote monitoring and control. By interfacing external I/Os from microcontroller, one can Power ON, RESET the module and also can Turn ON / Turn OFF the power for modem PCB.



### Features

- 4G/3G/2G communication coverage. Supports GSM, LTE-TDD and LTE-FDD at CAT1 speed.
- UART communication or USB interface for AT commands.
- Level translated I/O's available for controlling LTE module ON/OFF, Reset etc.,
- Power input over current protection, ESD protection for antenna and other external interface signals.
- Operating voltage of 5V±5%; Operating temperature: -40°C to +85°C.

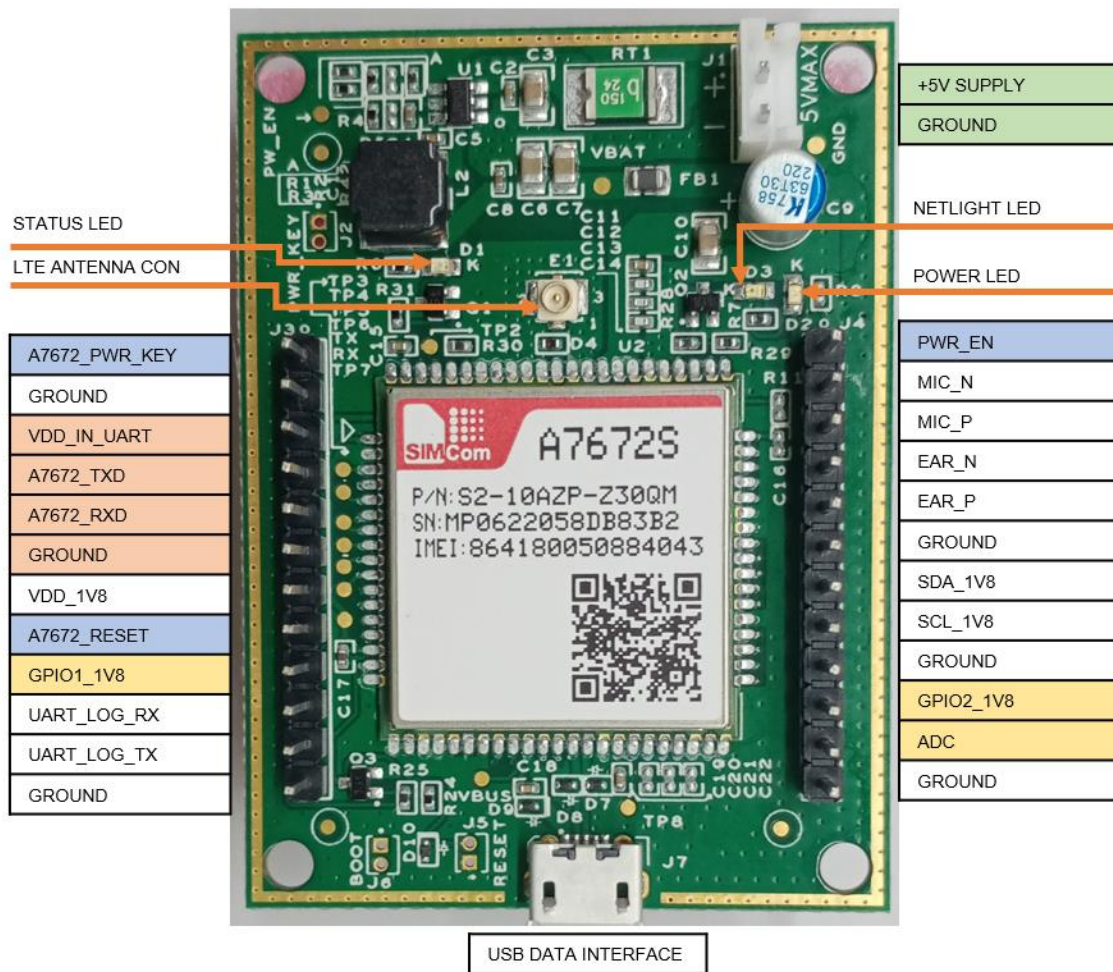
### Benefits

- Level translated UART Rx, TX lines gives flexibility to interface with any microcontroller or Arduino PCBs operating from 3.3V to 5.0V
- USB based AT command interface enables the 4G LTE Modem board also to easily interfaced with Processor boards having USB host such as Linux SOMs or Raspberry Pi etc.,
- Two-layer impedance-controlled PCB for good performance.

### Purchase Notes

- External GSM antenna and antenna cable available for purchase as accessory.
- For applications where any other external antenna is used, antenna impedance matching services with casing can be availed at additional charges. For details write to [estore-enquiry@parrytech.net](mailto:estore-enquiry@parrytech.net)

Pin Out Diagram



Ordering part number **PTG4GBOB-SC104V0**

About ParryTech

**Estore products:**

Ready to use subsystem modules/products for customers to quickly test, develop Internet of Things (IoT) applications.

**Engineering/System integration services:**

Our engineering services ranges from early engagement with customers to understand the system needs, convert the needs into requirements, finalize on the right technology implementation, circuit design, simulations, PCB development & testing, characterization, final qualifications, documentations at all stages and assistance on the product manufacturing and deployment.

**Total Solutions:**

Products, platforms, and cloud solutions for end-to-end IoT deployments.

Website: [www.parrytech.net](http://www.parrytech.net)

e-mail: [estore-enquiry@parrytech.net](mailto:estore-enquiry@parrytech.net)

Contact: +91 9845057742

India Office:

Parry Technology India Private Limited

#65, 201, Surasa Enclave,  
Puttanna Road, Basavanagudi,  
Bangalore 560004.

e-mail: [enquiry@parrytech.net](mailto:enquiry@parrytech.net)